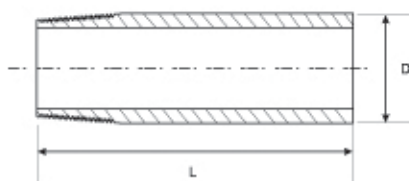
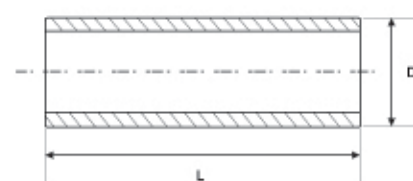


A 两端管螺纹  
Both end thread



B 一端管螺纹一端平  
One end thread and one end plain



C 两端平  
Both end plain

## 短节 NIPPLE

国际通用系列钢管 (英制管) British Pipe

公称通径 Nominal Diameter		外径 Outside Diameter	Sch40 STD Sch80 XS	Sch160 XXS	L
DN	NPS	D			
8	1/4	13.5	O		60 90 120 150 180
10	3/8	17.2	O		
15	1/2	21.3	O	O	
20	3/4	26.7	O	O	
25	1	33.4	O	O	
32	1.1/4	42.2	O	O	
40	1.1/2	48.3	O	O	
50	2	60.3	O	O	

国内沿用系列钢管 (公制管) Metric Pipe

公称通径 Nominal Diameter	外径 Outside Diameter	厚度 Thickness	长度 Length
DN	D		
10	14	2-5	100 150 200
15	18		
20	25		
25	32		
32	38		
40	45		
50	57		

### 说明:

- 短管 (英制管) 有 A、B、C 三种型式, 短管 (公制管) 仅有 C 型。
- 订货示例: A(NPT) 1/2" Sch80 L150 304 不锈钢 (英制管),  $\phi 18 \times 2$  L100 20 钢 (公制管)

### Note:

- The type of nipple is A、B、C for British Pipe and only type C for Metric nipple.
- Example: A(NPT) 1/2" Sch80 L150 304 S.S.(British Pipe),  $\phi 18 \times 2$  L100 20# (Metric Pipe)