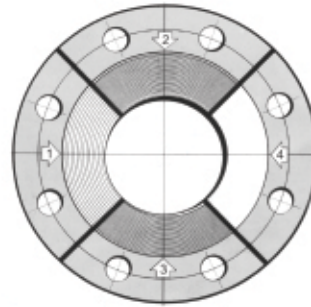
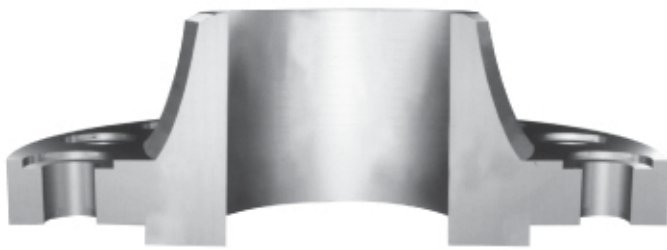


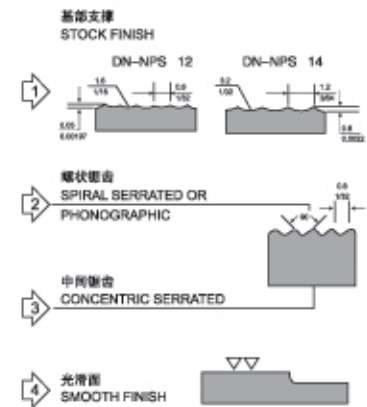


锻造法兰  
FORGED FLANGE

## 法兰剖面图 FLANGE CUT PLANE



## 密封面参数 PARAMETER OF SEALED COVER



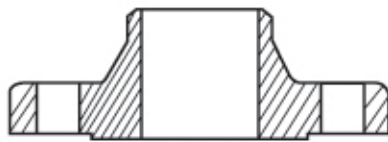
## 法兰结构图 FLANGE STRUCTURE



板式平焊法兰(PL)  
Plate-type Flat Welding Flange



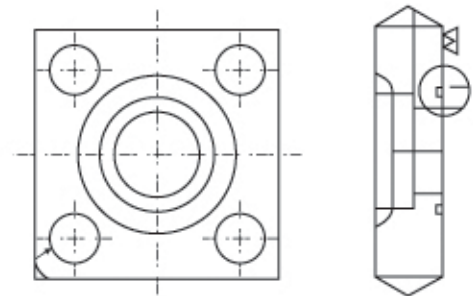
带颈平焊法兰(SO)  
Slip-on Neck Flange



对焊法兰(WN)  
Weld Neck Flange



承插焊法兰(SW)  
Socket Welding Flange



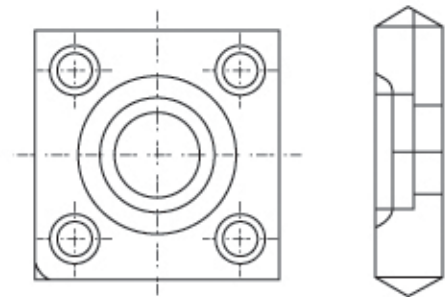
高压方法兰凸  
High-pressure Square Flange Convex



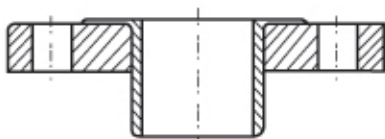
螺纹法兰(TH)  
Threaded Flange



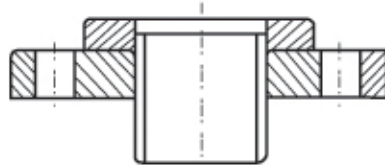
法兰盖(BL)  
Blind Flange



高压方法兰凹  
High-pressure Square Flange Concave



对焊环松套法兰(PJ/SE)  
Butt Welding Ring Loose Flange



平焊环松套法兰(PJ/PR)  
Flat Welding Ring Loose Flange

注：由于法兰的制造标准及规格较多，本公司在此不提供详细规格参数，用户如需要可另提供，非标法兰可按用户图纸加工制造。